

Module II

complementary studies



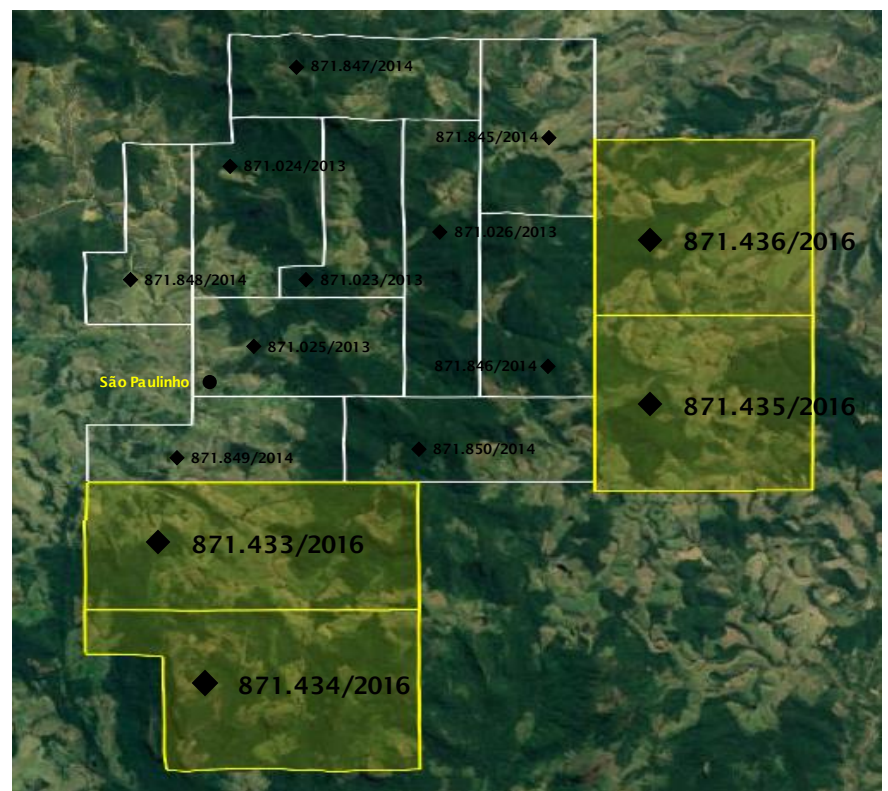
After the general evaluation of the area, through the cartography analysis of the main known bodies, lineaments, faults and distribution of the geological units mapped in the region, the company MULTIVERSE MINERAÇÃO continued the studies in the region, in the Extreme South of Bahia.

The first guiding impulse of these new studies was exactly the mineralogical characterization, considering that the area is inserted in the geological context marked by paragneisses and by granitoid intrusions, belonging to the Jequitinhonha Complex and the São Paulinho Suite, which represent an indicator profile of a large rare earth deposit in the region, according to geophysical data, thus being a promising area to confirm the deposits researched by MULTIVERSE MINERAÇÃO, because this is where the Rare Earth Bahia Project is located.

Id	No. Process	Area (ha)	Title Type	Title Status	Publication date
1	871433/2016	1,918.67	Business License	Granted	9/28/2016
2	871434/2016	1,737.97	Business License	Granted	9/28/2016
3	871435/2016	1,992.92	Business License	Granted	9/28/2016
4	871436/2016	1,738.58	Business License	Granted	9/28/2016

Therefore, continuing the studies in the Jequitinhonha Complex, MULTIVERSE MINERAÇÃO has applied for another 04 areas in the organ ANM, conveyed in processes number: **871,433/2016, 871,434/2016, 871,435/2016 and 871,436/2016**, for the purpose of carrying out the advances in research in the legal form and also conclusively of mineral deposits, which were conveyed to the Final Research Report, attached to the processes.

The complement of the rare earth geological studies of the MULTIVERSE MINERAÇÃO, granted with a research license, covers an area expansion equivalent to about 7.388 ha.





In order to reach the necessary conclusions in these new required areas, MULTIVERSE MINERAÇÃO continued the investigation through scientific methods of prospecting and carried out systematic field sampling on rock and rock sediment, geophysical survey in trenches, aerial photos and filming, shallow drilling, cubing and laboratory analysis performed to the international standard, allied to the works of topography, contextualization and geological recognition, and with that, it was confirmed the significant anomalies of deposits in Rare Earth granitoids in this new block. This new observation was confirmed throughout the block, highlighting the **Neodymium, Lanthanum, Cerium and Iterbio**, confirming the presence of these elements in all the researched region, part of the so-called Jequitinhonha Complex, where Rare Earth Bahia Project is located. In this new research, other important elements were also found, such as niobium, cobalt and tantalum.

This way, the continuity of the research coordinated and directed by MULTIVERSE MINERAÇÃO for the evaluation of rare earths in the region has resulted in the confirmation of rare earth anomalies throughout the block, plus new elements, and consequently it resulted in the expansion of the Rare Earth Bahia Project, with which the new discoveries now occupies an area of approximately 18.000 hectares.

